

0603 Time-Delay SMD Fuses

SC0603 Time-Delay Series

Description

SC0603 Time-Delay Series are the fuses set the industry standard for performance, reliability and quality. The solder-free design provides excellent on-off and temperature cycling characteristics during use and also makes our SMD fuses more heat and shock tolerant than typical subminiature fuses.



Features

- ◆ Rapid interruption of excessive current.
- ◆ Compatible with reflow and wave solder.
- ◆ Ceramic and glass construction.
- ◆ One time positive disconnect.
- ◆ Lead Free and Halogen free material.

Electrical Characteristics

Rated Current	1.0In	2.0In	2.5In	3.5In
250mA~750mA	4 hour min	--	--	5 sec max
1~5A	4 hour min	1-60 sec	5 sec max	--
6~7A	4 hour min	1-60 sec	--	--
8A	4 hour min	--	5 sec max	--

Specifications

Part Number	Rated Voltage DC (V)		Rated Current (A)	Breaking Capacity (A)	Typical Cold Resistance (mOhms)	Typical Voltage Drop (mV)	Typical Pre-Arcing I ² t (A ² Sec)	Alpha Mark
06 100.0.25	63	32	0.25	50A	3100	1435	0.0012	D
06 100.0.375			0.375		1600	1250	0.0028	E
06 100.0.5			0.5		1000	750	0.005	F
06 100.0.75			0.75		440	550	0.015	G
06 100.1			1		240	310	0.035	B
06 100.1.5			1.5		125	250	0.08	H
06 100.2			2		68	170	0.16	K
06 100.2.5			2.5		52	200	0.29	L
06 100.3			3		34	155	0.32	O
06 100.3.5			3.5		22	130	0.54	R
06 100.4			4		20	100	0.95	S
06 100.5			5		13	95	1.8	T

0603 Time-Delay SMD Fuses

SC0603 Time-Delay Series

Specifications (Continue)

Part Number	Rated Voltage DC (V)		Rated Current (A)	Breaking Capacity (A)	Typical Cold Resistance (mOhms)	Typical Voltage Drop (mV)	Typical Pre-Arcing I ² t (A ² Sec)	Alpha Mark
06 100.6	32		6	50A	8.5	80	2.9	V
06 100.7			7		6.5	80	3.5	X
06 100.8			8		5.3	75	4.8	Z

- ◆ DC Interrupting Rating (Measured at rated voltage, time constant of less than 50 microseconds, battery source)
- ◆ DC Cold Resistance are measured at <10% of rated current in ambient temperature of 25 degrees
- ◆ Typical Pre-arcing I²t are measured at 10In Current

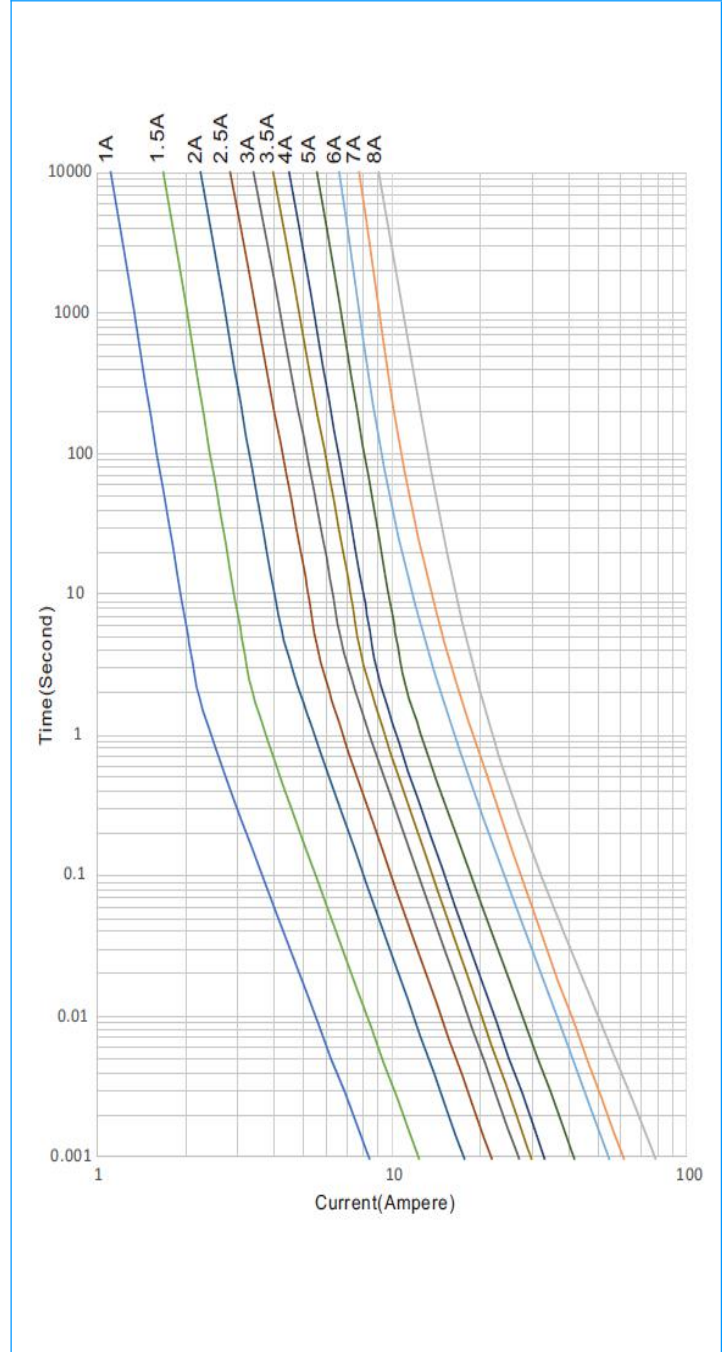
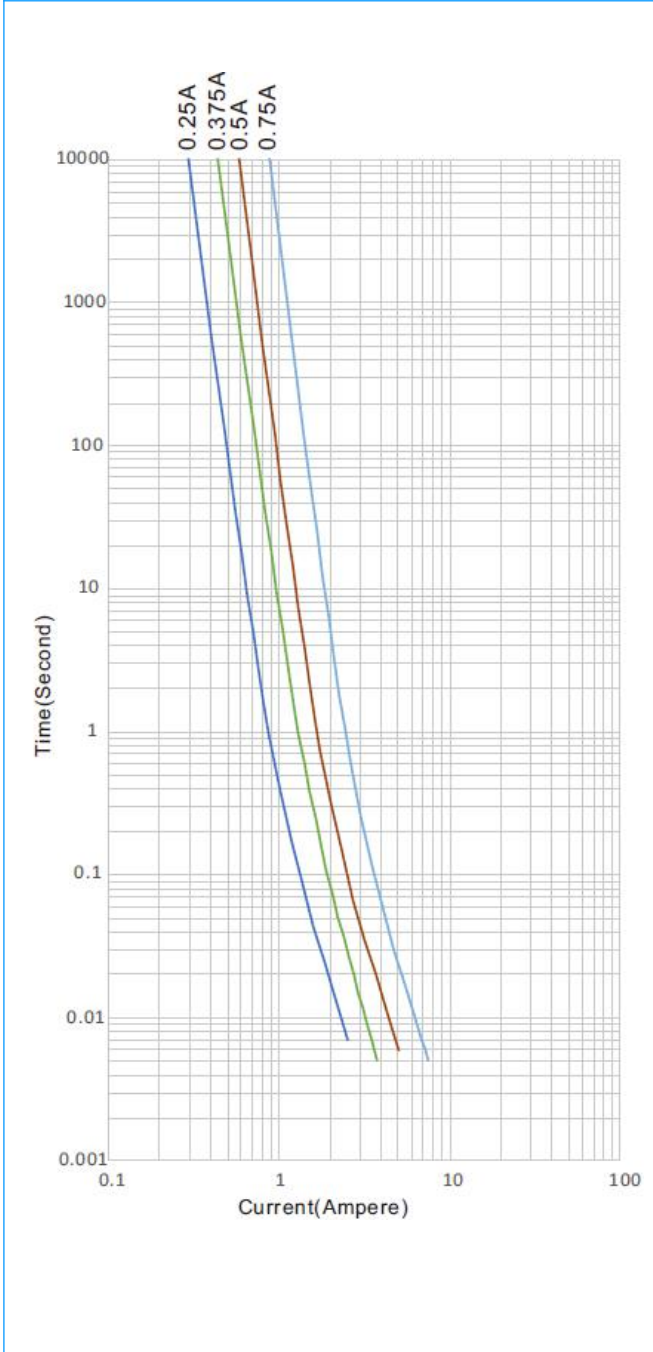
Product Characteristics

Materials	Body: Ceramic Terminations: Silver over-plated with tin Element: Alloy(Ag,Cu,Zn) Cover Coat: Glass
Operating Temperature	-55°C to 125°C Consult temperature derating curve chart
Thermal Shock	300 cycles -55°C to 125°C
Humidity	MIL-STD-202F, Method 103B, Condition D
Vibration	Per MIL-STD-202F, Method 201A
Insulation Resistance (After Opening)	Greater than 10,000 ohms
Resistance to Soldering Heat	MIL-STD-202G, Method 210F, Condition D

0603 Time-Delay SMD Fuses

SC0603 Time-Delay Series

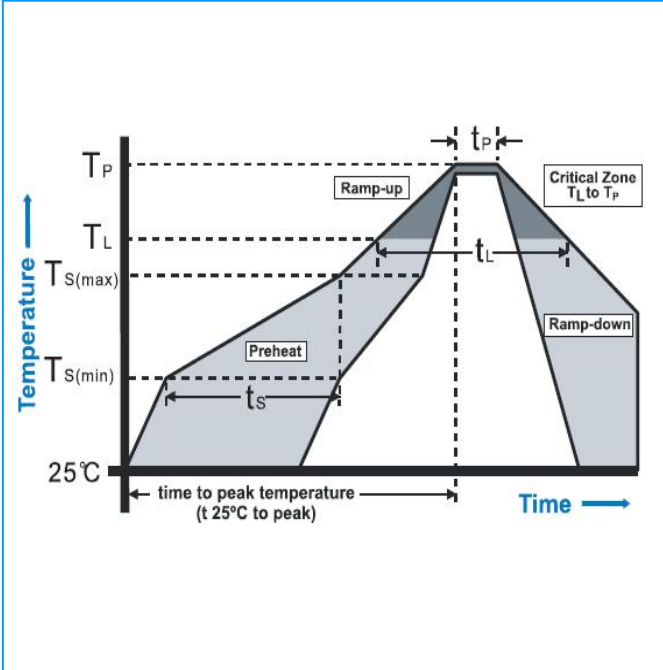
Time Current Curve



0603 Time-Delay SMD Fuses

SC0603 Time-Delay Series

Recommended Soldering Parameters



Reflow Condition		Pb-free assembly
Pre Heat	-Temperature Min ($T_{s(min)}$)	150°C
	-Temperature Max ($T_{s(max)}$)	200°C
	- Time (min to max) (t_s)	60 -120 seconds
Average Ramp-up Rate (Liquidus Temp (T_L) to peak)		3°C /second max.
TS(max) to TL - Ramp-up Rate		5°C /second max.
Reflow	-Temperature(T_L) (Liquidus)	217°C
	- Temperature (T_L)	60 – 150 seconds
Peak Temperature (T_P)		260+0/-5°C
Time within 5°C of actual Peak Temperature (T_P)		30 seconds
Ramp-down Rate Time 25°C to peak Temperature (T_P) Do not exceed		6°C/second max 8 minutes max. 260°C

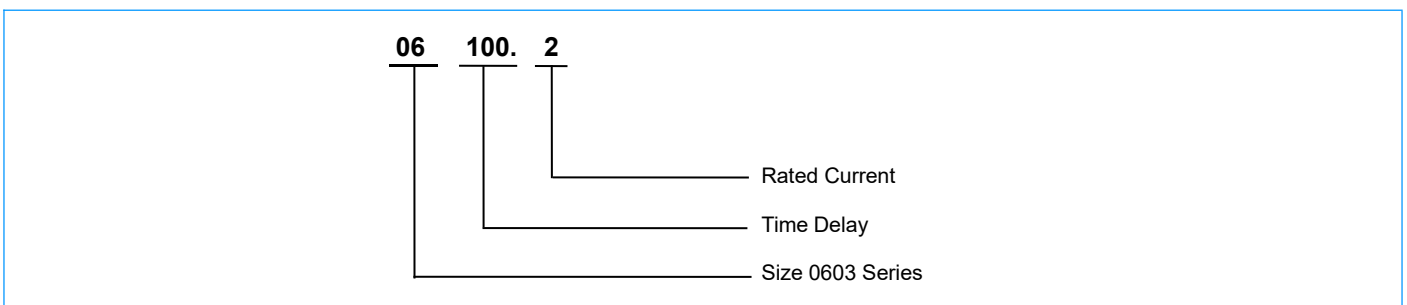
◆ **Wave / Reflow Soldering Parameters:**

- Solder Pot Temperature: 260°C max;
- Solder Dwell Time: 10 seconds max;

◆ **Hand-Solder Parameters:**

- Solder Iron Temperature: 280±5°C;
- Heating Time: 5 Seconds min;
- Generally, hand-soldering is not recommended;

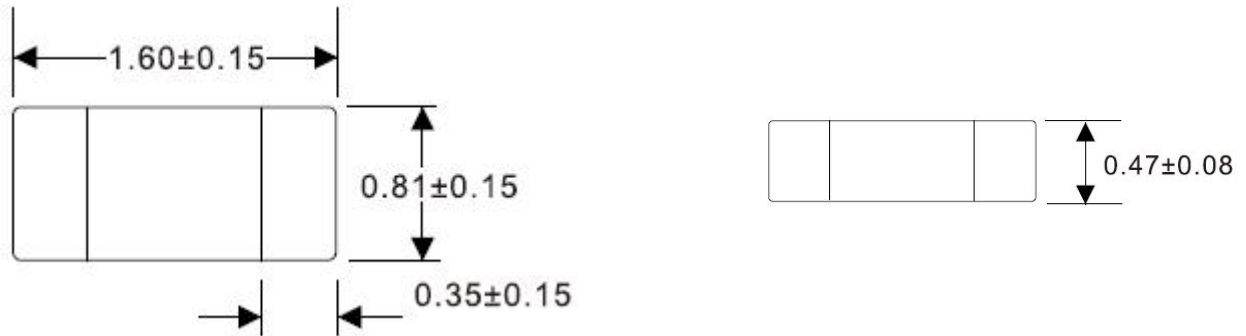
Part Numbering



0603 Time-Delay SMD Fuses

SC0603 Time-Delay Series

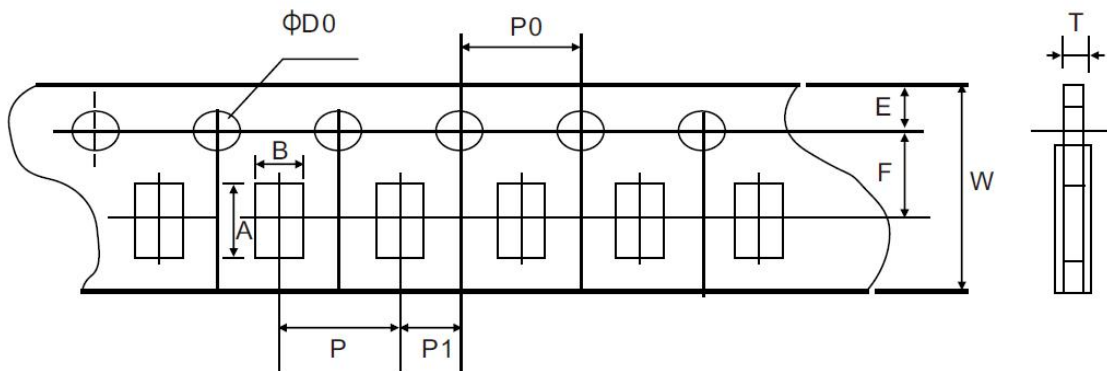
Dimensions (Unit: mm)



Packaging (Unit: mm)

5,000 pieces of fuses in plastic or paper taper

5000pcs)



Symbol	A	B	W	F	E
Spec.(mm)	1.85±0.10	1.10±0.10	8.00±0.10	3.50±0.05	1.75±0.10
Symbol	P	P0	P1	D0	T
Spec.(mm)	4.00±0.10	4.00±0.10	2.00±0.05	1.50±0.10	0.65±0.10